



Underfloor Air Terminal (Variable Volume)

MODEL:

MMIT - C

DESCRIPTION:

MMIT-C (Modular Integrated Terminal) is a manually adjustable constant volume air terminal assembly for use in raised floor air systems. It features 20 gauge (1mm) galvanized steel construction, pre-painted flat black.

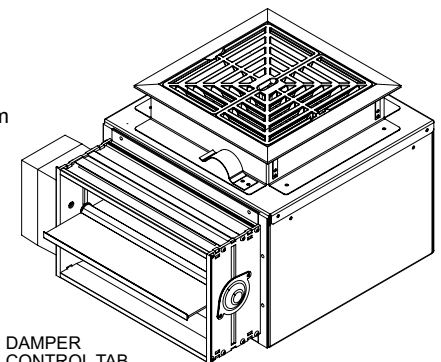
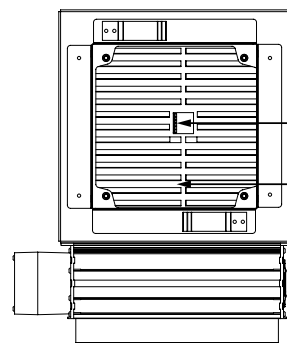
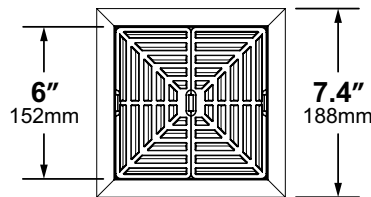
The air valve uses time modulation to vary total air delivered to a conditioned space. Air velocity is constant any time the valve is open; the short time duration between open/close cycles produces the effect of continuous air delivered to the occupied space. The air valve is rated for 24V (18-30VAC) operation. One (1) PAP-1 Plug & Play Cable is included.

The nominal 6" x 6" (152mm x 152mm) cast aluminum grille each include two separate inserts, which can be configured to create alternate air throw patterns. Ten (10) standard colors are available; custom colors and finishes can be provided to match architectural design (specify on order).

Air flow output is manually adjustable by setting the sliding damper plate to the desired CFM position. Adjustment controls are accessible by occupants directly through the grille.

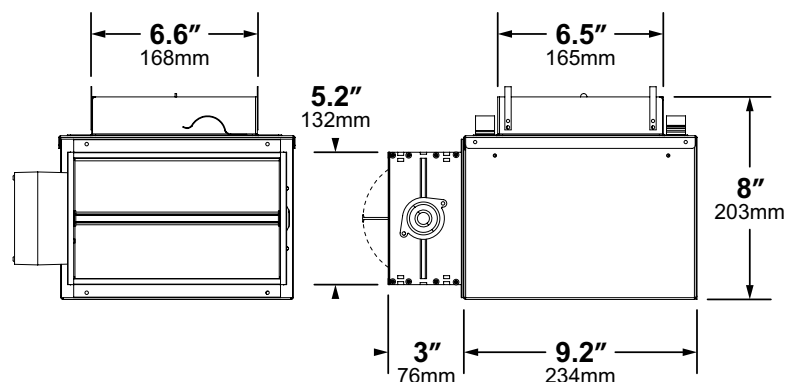
FEATURES:

- Manual air flow adjustment (accessible from surface of grille)
- Adjustable grille inserts create multiple air throw patterns
- Welded and riveted pre-painted galvanized steel
- Robust cast aluminum grille frame
- DC synchronized magnetic motor
- Multi-function circuit board for varying control strategies



DAMPER CONTROL TAB

SLIDING DAMPER PLATE



ALL DIMENSIONS NOMINAL +/- 0.1" (2.5mm)



Underfloor Air Terminal (Variable Volume)

MODEL:

MMIT - C

SPECIFICATIONS:

Application:	Underfloor Cooling Raised Access Finish Floor Height 8.5" (216mm) +
Terminal Dimensions:	12.2" x 9.2" x 8" (310mm x 234mm x 203mm)
LxWxH (Nominal)	Installation Cut-Out: 6.875" x 6.875" [+0.125/-0.00] (175mm x 175mm [+3.175/-0.00])
Grille Dimensions:	Diffuser Opening: 6" x 6" (152mm x 152mm) Full Face: 7.4" x 7.4" (188mm x 188mm)
LxW (Nominal)	
Grille Rating:	Cast Aluminum Conforms to NFPA 90a 1250 lbs. (567 Kg) Load Strength
Supply Press. / Temp.:	0.02–0.1 in. w.c. (5–25 Pa) 40–120°F (4–49°C)
Capacity (Nominal Max):	Sliding Damper Plate Fully Open 60 cfm @ 0.05 in. w.c. (102 m ³ /hr @ 12.5 Pa)
Noise Criterion:	≤ NC-17 (All Flow Conditions)