

Specification Sheet

CT CleanAir Tower™ (Air Purification Unit)

Description

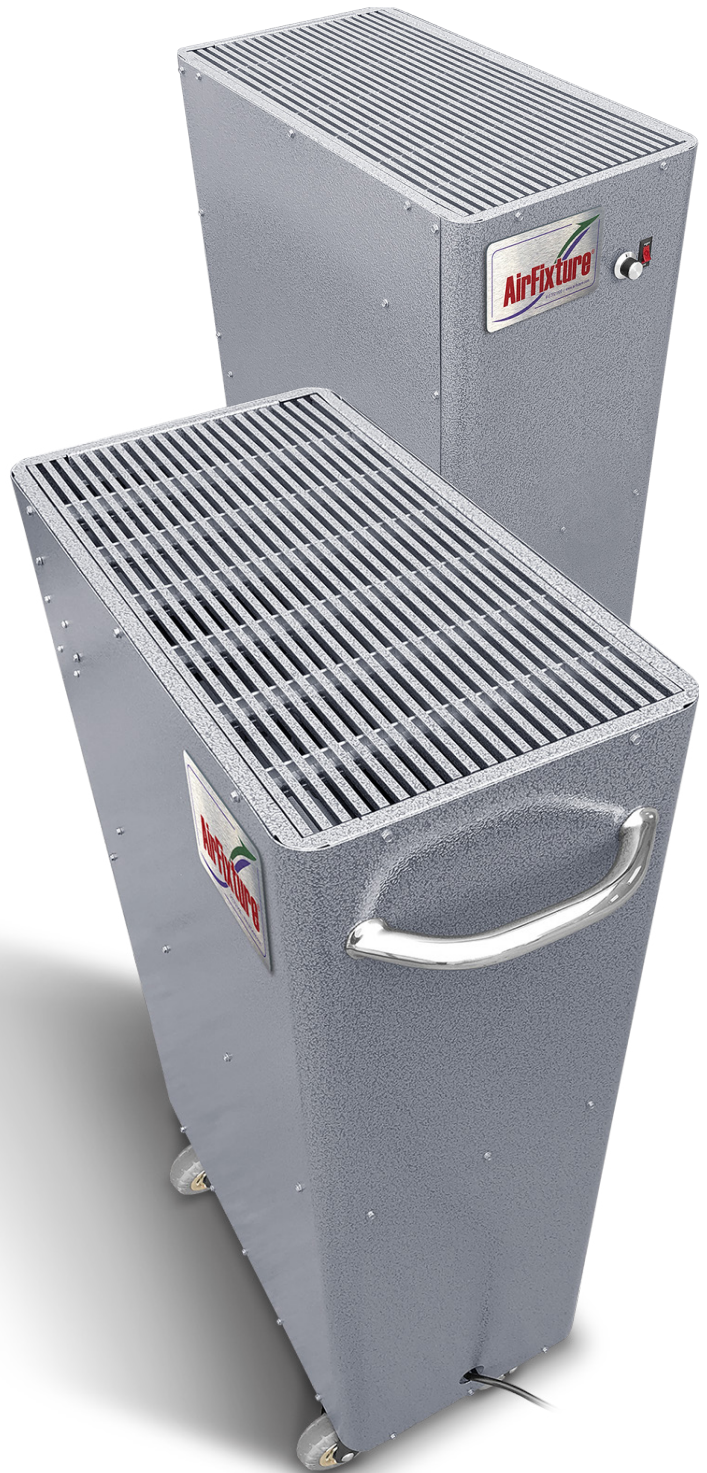
CT (CleanAir Tower) is a mobile air purification unit that utilizes optional Bi-Polar Ionization, UV Light and Air Filtration to help eliminate contaminants in the air.

- Bi-Polar Ionization creates a controlled amount of positive and negative ions, which attract and neutralize contaminants and particles. These ions are then dispersed into the area around the unit via the air flow outlet.
- The UV Light contained inside the unit uses 254nm wavelength ultraviolet light to neutralize airborne pathogens and microorganisms as they pass through.
- The Air Filter uses traditional filtration to catch larger particles as they enter the unit. The standard filter is available as MERV-4 through MERV-13; alternatively, an optional HEPA filter can be provided, which requires a slightly larger unit housing (specify on order).

Each of these individual purification processes can be used in any desired combination, or all together in conjunction to achieve maximum results.

An illuminated on/off switch and fan speed knob provide clear and easily accessible unit control. Power runs through a standard 120V (120/1/60) or 230V (230/1/60) female electrical plug. Multiple features are incorporated to ensure safe and maintenance-free operation, including a tip-over sensor switch and a circuit breaker to protect internal components.

The CleanAir Tower features all-steel construction with a durable factory applied powder coated finish, available in ten (10) standard colors; custom colors and finishes can be provided to match architectural design (specify on order). The grip handle provides convenient mobility along with the large soft rubber rolling casters, which are safe for use on a variety of floor surfaces such as carpet, wood, ceramic, VCT, and more.



Specification Sheet

CT CleanAir Tower™ (Air Purification Unit)

Features & Benefits

- Ships fully assembled, ready for immediate use
- Multiple options for air purification, which can be utilized simultaneously or in any desired combination
 - Bi-Polar Ionization attracts, neutralizes and safely disperses particles and contaminants
 - 254nm wavelength UV Light neutralizes airborne pathogens and microorganisms as they pass through
 - MERV-4 through MERV-13 Air Filtration traps larger particles that enter the unit (specify rating on order)
 - Optional HEPA Filter provides additional filtration (larger unit housing required)
- Optional Bi-Polar Ionization utilizes AtmosAir tube technology
 - Certified Ozone-Free Technology (UL 2998)
 - ASHRAE 62.1 Indoor Air Quality compliant
- Alternate option for Bi-Polar Ionization utilizes iWave-R Needlepoint technology
 - Certified ozone-free under UL 867
 - Self-cleaning design for maintenance-free operation
- Flexible design allows for alternative ionization and and UV light capability provided by the customer (contact manufacturer for additional information)
- Fully designed for simple and convenient mobility
 - Accessible ergonomic handle grip
 - Soft rubber rolling casters protect even the most delicate flooring surfaces
- Location of toggle on/off switch provides convenient control
- Manual occupant air flow adjustment via easily accessible speed control dial
- All working parts are fully contained within the unit housing for safe, reliable operation
- Multiple features ensure safe unit operation with minimal maintenance
 - Circuit breaker for protection of internal components
 - Tip-over switch monitors and fully deactivates unit when an unsafe degree of tilt is detected
- Quiet operation for unintrusive use in occupied spaces such as offices, classrooms, etc.
- Long-lasting run time between service intervals; up to 18,000 hours continuous operation (subject to change based on selected filter options)

Specification Sheet

CT CleanAir Tower™ (Air Purification Unit)

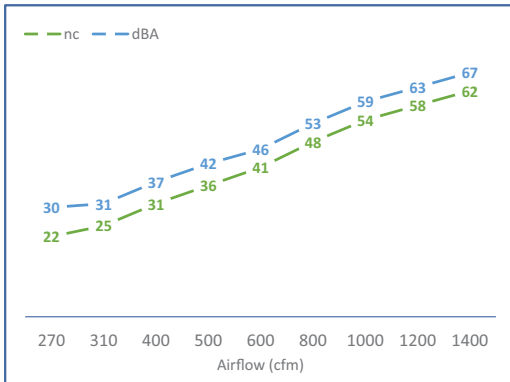
Specifications

Application:	Air Purification Occupied Interior Spaces
Overall Dimensions:	CT-41 41" x 24" x 12" (1041mm x 559mm x 305mm)
HxWxD (Nominal)	CT-60 60" x 28" x 16" (1524mm x 711mm x 406mm)
Diffuser Opening:	CT-41 22" x 10" (559mm x 254mm)
LxW (Nominal)	CT-60 26" x 14" (660mm x 356mm)
Construction:	Galvanized Steel 20 Gauge (1mm) Factory-Applied Powder Coat Finish (Specify Color on Order)
Weight:	CT-41 82 lbs. (37.2 kg)
(Nominal)	CT-60 To Be Determined
Supply Press. / Temp.:	0.02–0.1 in. w.c. (5–25 Pa) 40–120°F (4–49°C)
Air Flow Capacity:	Minimum: 270 cfm
(Nominal)	Maximum: 1400 cfm
Noise Criterion:	CT-41 Minimum: NC-22 / 30 dBA
(Nominal)	Maximum: NC-62 / 67 dBA
	CT-60 To Be Determined (Pending Testing)

Specification Sheet

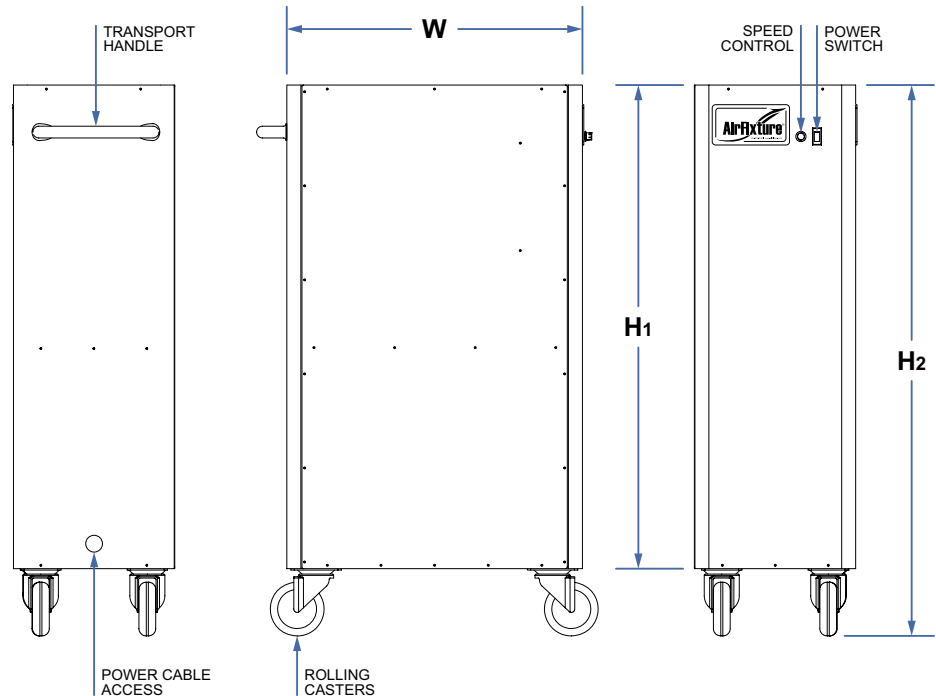
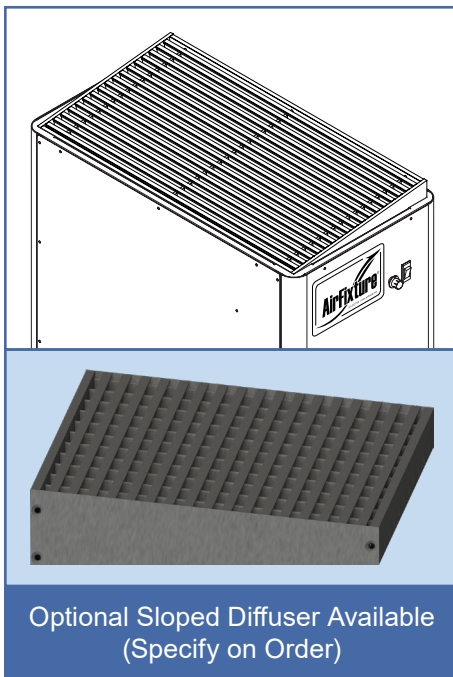
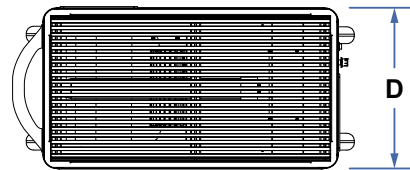
CT CleanAir Tower™ (Air Purification Unit)

Unit Detail



UNIT	H1 HOUSING HEIGHT		H2 FULL HEIGHT		W HOUSING WIDTH		D HOUSING DEPTH	
	in	mm	in	mm	in	mm	in	mm
CT-41	36	914	41	1041	24	610	12	305
CT-60	55	1397	60	1524	28	711	16	406

ALL DIMENSIONS NOMINAL $\pm 0.1"$ (2.5mm)



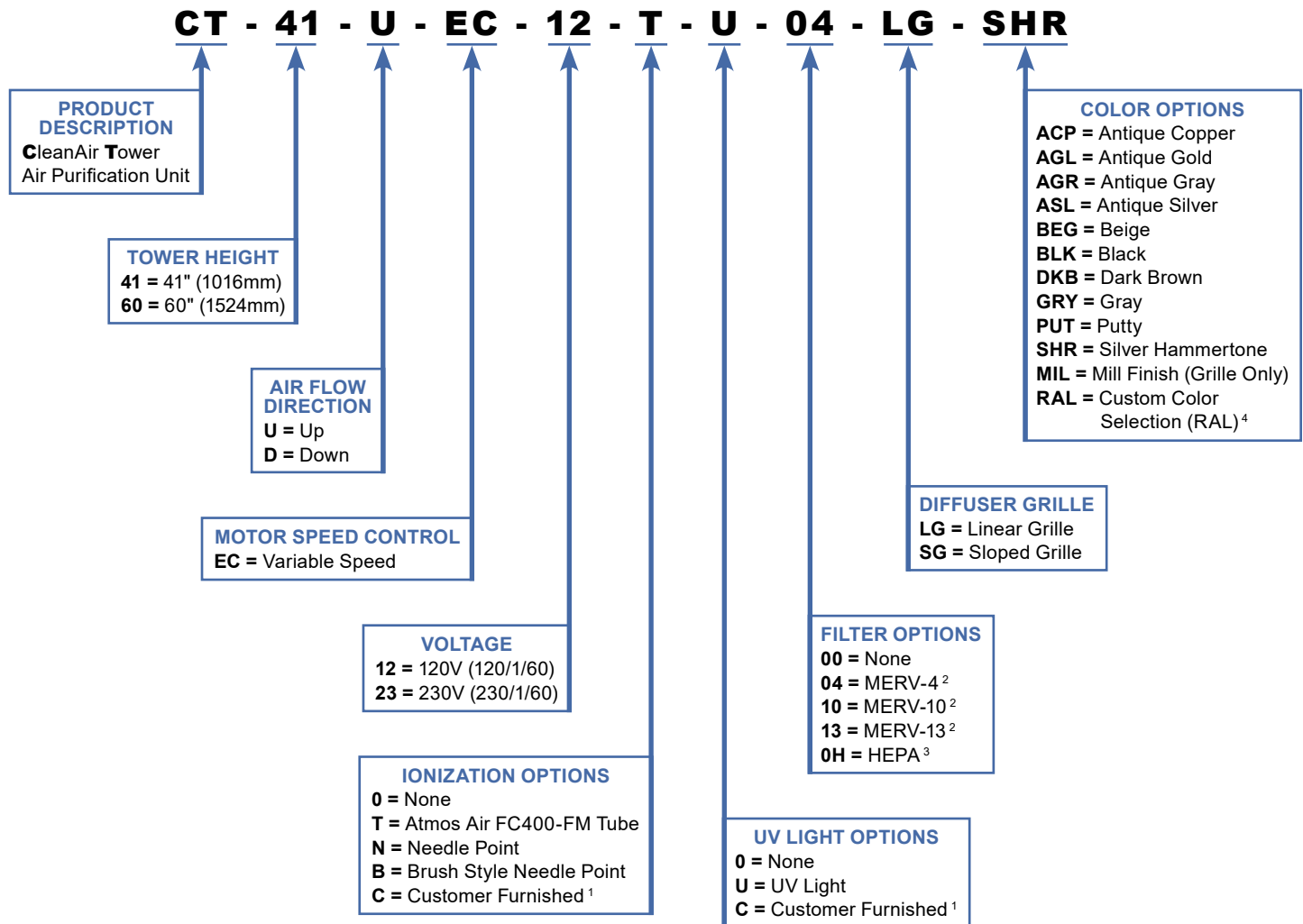
Electrical Performance

120V (120/1/60) | 230V (230/1/60)

PRODUCT DESCRIPTION		PRIMARY VOLTAGE	PHASE	FAN MOTOR VOLTAGE	MCA	MOP
CT	12	120V	1	120V	9.6A	15A
	23	230V	1	230V	5.4A	15A

Specification Sheet

CT CleanAir Tower™ (Air Purification Unit)



¹ An additional factory installation fee is required for all customer furnished equipment.

² Sound and air flow levels may differ from tested results when using 3rd party filters.

³ HEPA Filter option requires larger cabinet size and may result in higher noise levels.

⁴ Include desired RAL number for color selection; additional set-up fee may apply.

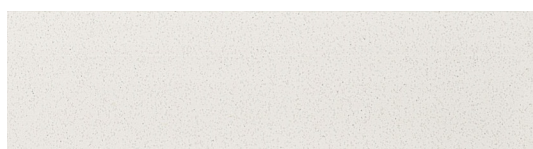
Specification Sheet

CT CleanAir Tower™ (Air Purification Unit)

Color Options

AirFixture is pleased to offer the following standard color options for the CleanAir Tower. The exterior of the tower is electrostatically coated with baked-on powder coating for the finest finish in the industry. The results of this process are not only aesthetically unmatched, but will also enhance the tower's ability to stand up to the harshest of applications.

Standard Colors



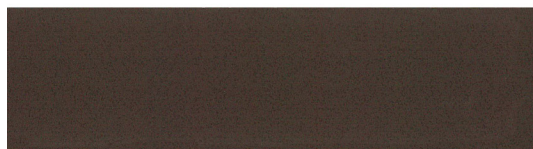
Putty

RAL 9002



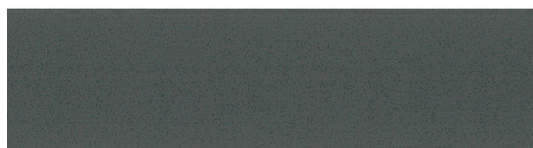
Beige

RAL 1019



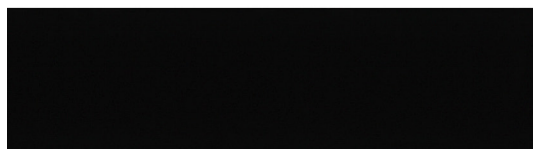
Dark Brown

RAL 8014



Gray

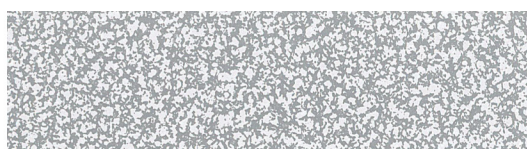
RAL 7012



Black

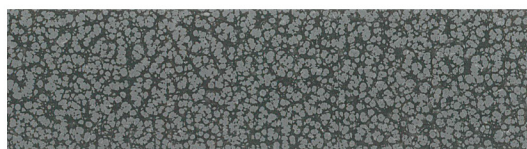
RAL 9011

Antique Colors



Antique Gray

09/90170



Silver Hammertone

09/90250



Antique Silver

09/90190



Antique Copper

09/90180



Antique Gold

09/90200

NOTE: Colors shown are reproductions intended to approximate actual colors as closely as possible.